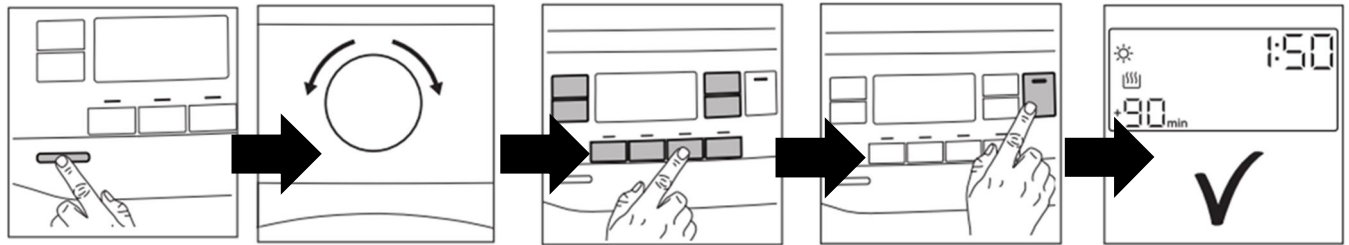



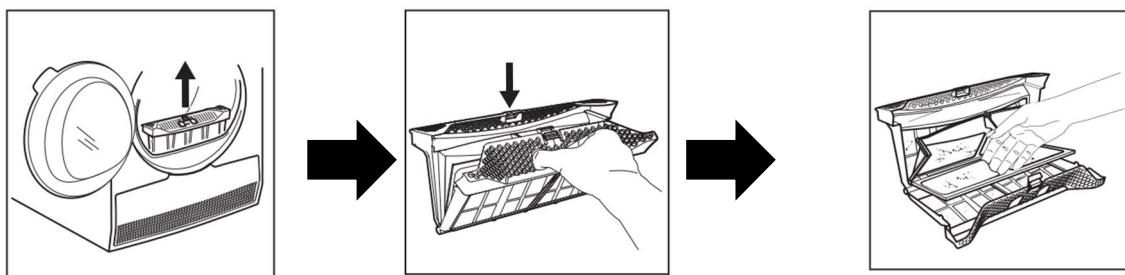
Sušilni stroj - hitro navodilo za uporabo / Dryer - quick start guide



	1	2	3	4	5
SVN	Dajte oprano v sušilni stroj in zaprete vrata. Pritisnite tipko za vklop/izklop za vklop naprave	Program nastavite z gumbom za izbiro programa	Skupaj z programom nastavite eno ali več posebnih funkcij. Za vklop ali izklop funkcije se dotaknite ustrezne tipke (detajle glej manual)	Program vklopite z dotikom tipke Začetek/Prekinitev	Naprava se zažene.
ENG	Put the washer in the dryer and close the door. Press the on / off button to switch on the device	Set the program with the program selection button	Together with the program setting one or more special functions. To activate or deactivate the function, touch the corresponding button (see manual for details)	Activate the program by touching the Start / Interrupt button.	The device starts up.

Ob koncu vsakega programa se na prikazovalniku prikaže symbol za filter “” in obvezno morate očistiti filter.

At the end of each program, the filter symbol “” appears on the display and you must clean the filter.



	1	2	3
SVN	Filter potegnete nežno ven.	Pritisnite tipko na filtru in filter odprete.	Prsti nežno odstranite vlakna in je dajte v posodo za smeti – NE v odtok. Filtr vrnite nazaj
ENG	Pull the filter out gently.	Press the button on the filter and open the filter.	Gently remove the fibers with your fingers and put it in the trash bin - NOT in the drain! Return the filter